

(6) 1. Give two experimental features that would distinguish between passive diffusion and facilitated diffusion in the transport of a substance across a cell membrane.

Page	Points
1	_____
2	_____
3	_____
4	_____
Total	_____

(10) 2. Classify each of the following transport systems according to the terms in the list at the right by putting the appropriate letter or letters in the blank next to the transport system. More than one term may apply.

- | | |
|---|-------------------------------|
| _____ glucose transporter of erythrocytes | a. primary active transport |
| _____ anion transporter of erythrocytes | b. secondary active transport |
| _____ Na ⁺ /K ⁺ ATPase of plasma membrane | c. symport |
| _____ Ca ²⁺ ATPase of sarcoplasmic reticulum | d. antiport |
| _____ amino acid uptake driven by a Na ⁺ gradient | e. uniport |
| | f. facilitated diffusion |

(8) 3. You have prepared DNA from two organisms isolated from the swamps of south Georgia, designated **culture A** and **culture B**. DNA from **culture A** contains 28% G, while DNA from **culture B** contains 23% G. Complete the following table for the expected composition of the other purine and pyrimidine bases.

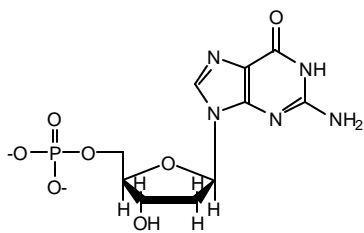
	%G	%A	%T	%C	Total
Culture A	28	_____	_____	_____	100%
Culture B	23	_____	_____	_____	100%

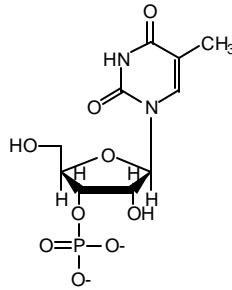
DNA from which organism will have the higher melting temperature?

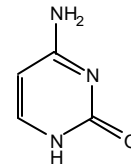
(12) 4. Which form of DNA helix (**A**, **B**, or **Z**): (put answer in blank)

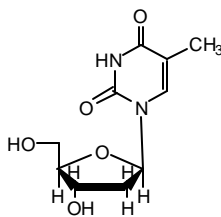
- | | |
|--|-------------------------------------|
| _____ has the greatest tilt angle of the base pairs? | _____ has a left-handed helix? |
| _____ has deoxyguanosine in the syn conformation? | _____ is favored by low humidity? |
| _____ is favored by high GC content? | _____ is formed by RNA-DNA hybrids? |

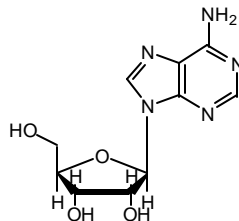
- (12) 5. Name the following structures, and indicate whether they can be found in DNA, RNA, or both.

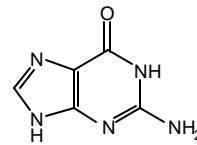












- (12) 6. Name the six classes of enzymes according to the International Commission on Enzymes classification scheme.

- (8) 7. Which of the following are assumptions made in the **original** derivation of the Michaelis-Menten equation for a one-substrate, one-product reaction? (Not the Briggs-Haldane modification. Put a check by the appropriate assumptions.)

_____ [S] >> [E_{total}].

_____ [E_{total}] >> [E_{free}].

_____ $K_M = [E][S]/[ES]$

_____ The rate of formation of ES equals its rate of breakdown.

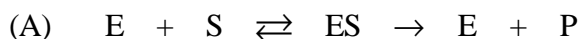
_____ The velocity of the catalyzed reaction is equal to $k_1[E][S]$.

_____ The rate of breakdown of ES to E + P is much faster than the rate of breakdown of ES back to E + S.

_____ The concentration of ES is small relative to the concentration of E_{total}.

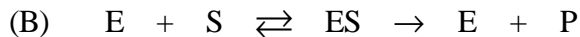
_____ The rate of reaction is equal to $k_2[ES]$.

(17) 8. Following are three models for reversible inhibition of a simple one-substrate enzyme reaction:



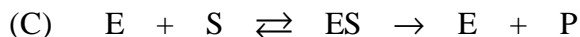
where

$$K_i = \frac{[E][I]}{[EI]}$$



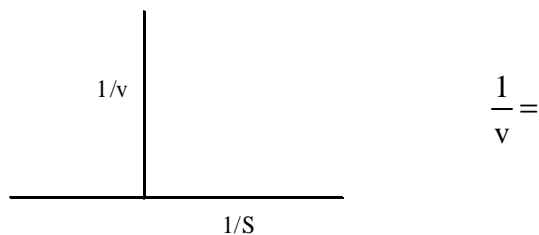
and

$$K'_i = \frac{[ES][I]}{[ESI]}$$

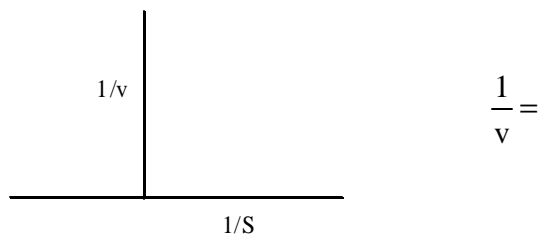


(a) For each of the above models, complete the reciprocal form of the rate equation given below, and draw two lines on each of the Lineweaver Burke plots for each rate equation, one line showing no inhibitor, one line showing the presence of inhibitor (indicate which line is which):

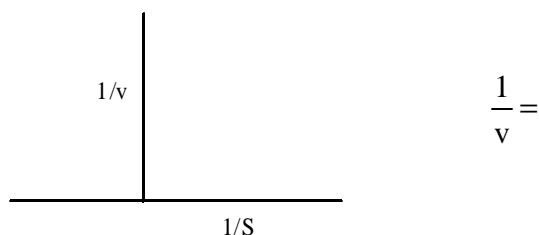
A.



B.



C.

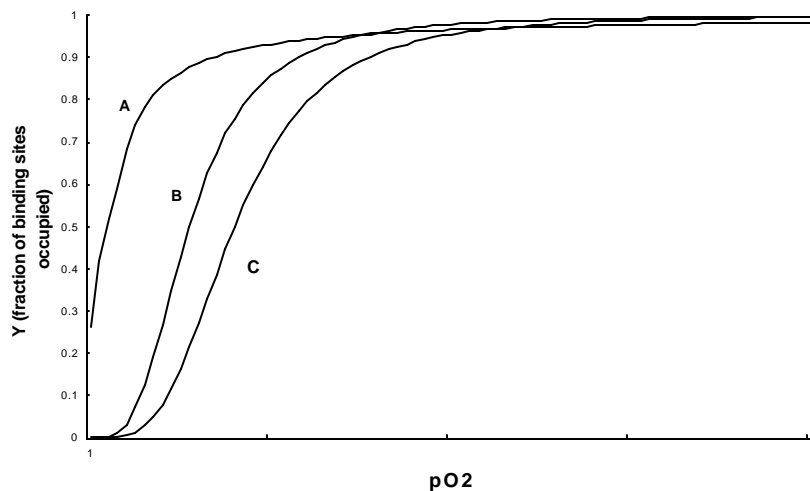


(b) Which of the above models (**A, B, or C**) correspond to
 competitive inhibition _____ pure noncompetitive inhibition _____
 uncompetitive inhibition _____ mixed noncompetitive inhibition _____
 not competitive _____

- (5) 9. The pH-rate profile for ribonuclease is bell shaped, with a pH maximum at 6.0 and inflection points of approximately 5.8 and 6.2 in the two sides of the curve.
- (a) What amino acid side chain(s) would be likely candidates for titration at these pK values?

 - (b) Presumably the groups responsible for these pH effects would be involved in general-acid or general-base catalysis in the mechanism. Identify by pK (5.8 or 6.2) the
 - _____ general-acid catalyst
 - _____ general-base catalyst

- (10) 10. The following graph shows three idealized curves that could describe oxygen binding to a transport protein such as hemoglobin or myoglobin. Identify by letter the curve or curves that represent the situations described in the comparisons below.



- (a) Comparing fetal hemoglobin (_____) to normal hemoglobin A (_____).
- (b) Comparing hemoglobin (_____) to myoglobin (_____).
- (c) Comparing hemoglobin at pH 7.4 (_____) to hemoglobin at pH 7.2 (_____).
- (d) Comparing hemoglobin (_____) to hemoglobin dissociated into subunits (_____).
- (e) Comparing hemoglobin with normal bis-phosphoglycerate (BPG) (_____) to hemoglobin with a lower concentration of bis-phosphoglycerate (BPG) (_____).